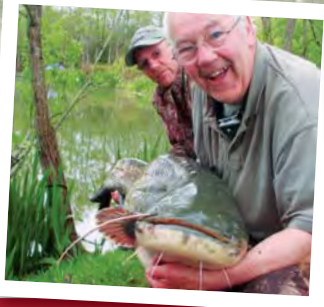




# Fisheries Guide

[www.news-reel.com](http://www.news-reel.com)



**Your White Acres Lakes Guide, Fishing Rules and Information**



## Welcome to the White Acres Fisheries Guide

Whether you are a specimen, match or pleasure angler, this booklet will help you get the most from your fishing trip at White Acres. If it's your first trip, or if you're a returning guest, you're sure to find it handy when choosing which lakes to fish. We've also included our fishery rules in the back, so please take a moment to read these through. They need to be adhered to at all times and you must keep your fishing permit with you at all times too. If you are in doubt about any of the rules or information in this booklet, just speak to a member of the Fisheries Team. They're always on hand to help with friendly advice and to answer your questions.

The Tackle Shop is fully stocked with all the leading brands of bait and tackle, and is open daily from 8.00 am through to 5.00pm. It is sometimes closed for match weigh-ins, lake maintenance or lunch, and will be clearly signed on the door when this is the case. At The Tackle Shop, along with lots of expert knowledge, you'll find everything you'll ever need whilst fishing our lakes. So if you're looking for a full set-up or replacement rig, this is the place to come, with brand name baits, shelf life baits, a variety of frozen baits, fresh maggots, casters and worms - plus our very own range of pellets and groundbait.

Our lakes are designed to cater for anglers of all ages and abilities, with a number of pegs that are wheelchair friendly. Our pleasure lakes are open from dawn till dusk, so whether it's a full day's fishing you're after, or a couple of hours in the morning or evening, we've got it covered. For the more seasoned angler there's also night fishing on our specimen lakes, and weekly tuition available for ladies and juniors too (please come to The Tackle Shop for more information). Plus you'll find ample parking in three areas, with easy access to the lakes.

**The Tackle Shop is open daily from 8.00am to 5.00pm**  
 For more help or information please call us on 01726 862519 or 01726 862526  
 or email [kirstybyrne@parkdeanholidays.com](mailto:kirstybyrne@parkdeanholidays.com)

### Trewaters Open Match | Sunday

Please book early to avoid disappointment as numbers are restricted. Open to all anglers. Draw time at 9.30am at the lake (directions to lake in the back of this booklet). Fishing from 11.00am - 4.00pm. Presentation at the lake.

### Gold Pool Match | Monday

Open to all anglers but you cannot fish the silver match. Book your entry by Sunday 1.00pm. Draw time 9.00am at The Tackle Shop. Fishing from 10.30am to 3.30pm. Presentation in 'The Venue' at 5.00pm - Entry Fee £15.00.

### Silver Pool Match | Wednesday

Only for anglers who have not won a White Acres match, a 30 peg open or are sponsored. Book your entry by Tuesday 1.00pm. Draw time 9.00am at The Tackle Shop. Fishing from 10.30am to 3.30pm. Presentation in 'The Venue' at 5.00pm - Entry Fee £10.00.

### 'Bait Tech' Rover Match | Thursday

Book your entry by Wednesday 1.00pm. Draw time 8.45am at The Tackle Shop. Fishing time 10.30am to 3.30pm. Presentation 4.45pm at The Tackle Shop - Entry Fees Senior £10.00. 50% of the Seniors' Entry is paid out in cash. All the remainder paid in prizes. Every angler that weighs in receives a prize. £100 worth of prizes. Sponsored by Bait Tech. Entry Fee Junior £5.00, Entry Fee Ladies £5.00. Please use your own keepnets for matches.

**NOTE: Water Lilly Mark or soft mesh only (no large holes). Please note all lakes (except specimen) are closed on Thursday between 8.30am and 10.30am for the Rover Draw. You can fish before 8.30am, but if you are not fishing at a peg by this time you will have to wait until 10.30am to find a free peg.**

### Specimen Anglers

Carp of the Week Senior / Ladies / Junior sections. Catfish of the Week. All fish to be independently witnessed (not by family). One entry per angler. All entries Carp/ Catfish of the Week to be in by 1.00pm Thursday.

### Evening Club Presentation | Thursday

1st / 2nd / 3rd Carp of the Week Seniors/Ladies/Juniors. Biggest Catfish of the Week. Presentation at 8.00pm at The Lakeside Club

**match results are updated weekly at [www.news-reel.com](http://www.news-reel.com)**

# White Acres Lakes



1 Twin Oaks, 2 Acorn, 3 Canal, 4 Nelsons, 5 Trelawney, 6 Jennys, 7 Python, 8 Pollawyn, 9 Pats Pool, 10 Eery, 11 Sycamore

	Ten Pleasure Lakes										Three Specimen Lakes					
	No. of Pegs	Trench	Roach	Perch	Rudd	Bream	Crucians	F1 Carp	Brown Goldfish	Barbel	Mirror Carp	Common Carp	Ghost Carp	Grass Carp	Catfish	Chub
Jennys	52	✓	✓	✓	✓	✓	✓	✓	✓		✓	✓	✓			
Python (inc. 2 wheelchair friendly pegs)	37	✓	✓	✓	✓	✓	✓	✓	✓	✓	✓	✓	✓			
Pollawyn	55	✓	✓	✓	✓	✓	✓	✓	✓	✓	✓	✓	✓			✓
Sycamore (plus 3 wheelchair friendly pegs)	22	✓	✓	✓	✓	✓	✓	✓	✓	✓	✓	✓	✓			
Eery (inc. 3 wheelchair friendly pegs)	14	✓	✓	✓	✓	✓	✓	✓	✓		✓	✓	✓			
Trelawney	32	✓	✓	✓	✓	✓	✓	✓	✓	✓	✓	✓	✓			
Canal	20	✓	✓	✓	✓	✓	✓	✓	✓							
Acorn	19	✓	✓	✓	✓	✓	✓	✓	✓		✓	✓	✓			
Twin Oaks (two lakes)	36	✓	✓	✓	✓	✓	✓	✓	✓		✓	✓	✓			
Nelsons (two lakes)	24										✓	✓	✓	✓	✓	
Pats Pool	22										✓	✓	✓	✓	✓	

## Pollawyn 55 Pegs, 3.5 Acres

Pollawyn is one of the oldest lakes on the complex. Depths range from 3 feet in the margins to 9 feet on the high bank. Carp range from 2lb to 20lb so substantial tackle is needed. 100lb weights are not uncommon.

### Best Baits

Pellet and paste, meat or corn.

### Stocking

Carp to 20lb, F1 Carp, Tench, Crucians, Bream, Perch, Roach, Rudd, Chub and Barbel.

### Method

Waggler and feeder to the island, long pole deep and shallow and long pole to the island where you can reach.



## Jennys Lake 52 Pegs, 5 Acres

Jennys is the ideal lake to take younger anglers, as you can get bites all day on the pole at 4m. Bigger fish come to the lead, or feeder out towards the island. Average depths from 4 feet to 6 feet.

### Stocking

Carp to 18lb, Tench to 6lb, Bream, Crucian, F1 Carp, Roach, Perch, Rudd.

### Methods

Pole and waggler ideal for the smaller fish, you will catch shallow in the warmer weather. Long pole paste, meat or corn.

### Best Baits:

All bait will work on this lake. The bigger the bait, the bigger the fish.



## Trelawney 32 Pegs, 2.3 Acres

Trelawney is designed for the waggler feeder and pole. Approximately 20m wide. Depths range from 3 to 7 feet with plenty of fish in the margins in warmer weather.

### Stocking

Carp, F1 Carp, Skimmer Bream, Tench, Roach, Perch and Barbel.

### Best Baits

Pellets and paste, expander pellet, meat and corn.

### Methods

The fish come up in the water very quickly. Caster and pellet works. Chopped worm and caster are worth a try.



## Python 37 Pegs, including 2 wheelchair friendly pegs, 1.7 Acres

Python is a snake style lake with a bay at one end. Average depths are 6 feet down the middle to 3 feet in the margins. It has a good stock of F1 Carp, Tench, Skimmer Bream, Crucians, Roach and Perch so bites will be plentiful.

### Stocking

F1 Carp, Crucian, Tench, Brown Goldfish, Bream, Perch, Roach, Rudd and Barbel.

### Methods

Long pole shallow and deep, feeder in the bay.

### Best Baits

Pellet, paste and corn.

peg with wheelchair access

**POP INTO THE TACKLE SHOP TO STOCK UP ON ALL THE GEAR YOU NEED!**





## Twin Oaks 36 Pegs, 2 Acres

This lake has been designed to make fishing as fair as possible. It is 25 metres wide and 6 feet deep, sloping at 45 degrees towards either bank. This will force the angler into fishing the pole, feeder or waggler. The average sizes of the fish are approx 5lb and match catches in excess of 150lb.

**Best Baits**  
Pellet, paste and meat.

**Stocking**  
F1 Carp, Carp, Tench, Skimmer Bream and Roach.

**Methods**  
Pole, feeder or waggler. All of these will come into play as the fish back off.



## Sycamore 22 Pegs, plus 3 wheelchair friendly pegs, 1.5 Acres

Sycamore is an oval lake with two islands in the middle. It has a large stock of Carp from 1lb to 15lb and strong tackle is recommended.

**Stocking**  
Carp, F1 Carp, Bream, Tench, Roach, Rudd, Barbel and Perch.

**Methods**  
Best methods are big waggler to the islands, feeder or bomb. Larger baits will pick out the larger fish.

**Best Baits**  
Best baits are pellet and paste, large meat and surface baits pleasure fishing.



peg with wheelchair access

## Eery 14 Pegs, including 3 wheelchair friendly pegs, 0.8 Acres

Eery is approx 1 acre in size, 7 feet at its deepest and only 18 inches in the margin. This lake was totally changed in 2009 and restocked with plenty of small Pasty Carp. Watch out however, as there are a few larger Carp dotted amongst them!

**Methods**  
Pole deep and shallow.

**Best Baits**  
Pellets and paste are working well, larger baits are sorting out the better fish.

**Stocking**  
Carp to 8lb, Bream, Roach, Perch and F1 Carp.



peg with wheelchair access



## Canal 20 Pegs, 1.5 Acres

Canal has a massive head of F1 Carp and has been designed with the pole angler in mind.

**Best Baits**  
Pellets and corn.

**Stocking**  
F1 Carp, Skimmers and Tench.

**Methods**  
Long pole to the far bank, down the track and margins.

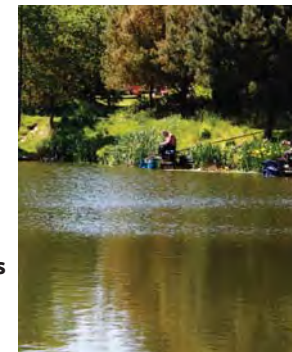
## Acorn 19 Pegs, 1.5 Acres

Oval lake with one big island in the middle. Depths range from 6 feet in the middle, sloping at 45 degrees towards either bank.

**Stocking**  
Carp, Skimmer Bream, Tench, Roach and F1 Carp.

**Methods**  
Long pole deep and shallow, small feeder tight to the far bank.

**Best Baits**  
Pellets, paste, corn and meat.



**Important** - Please remember to use your own keepnets in matches. Don't forget the etiquette of fishing - treat your neighbour with respect regardless of your peg. Enjoy your fishing and remember White Acres is a holiday park welcoming anglers of all abilities.

# White Acres Pleasure Fishing Rules



- No keepnets to be used on any lakes at any time other than organised White Acres matches.
- Fishing permits must be purchased prior to fishing. If money is collected on the bank you will be charged double.
- Please fish on platforms or stoned area provided. Fishing between pegs is not permitted.
- No reserving pegs by leaving tackle in a swim. Any tackle found unattended will be removed by the fishery staff after ½ hour.
- One rod only can be used on the pleasure lakes.
- No fly fishing.
- Method feeders may be used, but must be free running to a bead. A minimum hook length of 4 inches may be used with this method.
- All leads and feeders must be free running to a bead.
- Please fish in front of you.
- BARBLESS HOOKS only (no exceptions), maximum size 8.
- No floating the pole, fishing the rattler or tapping the water or any similar devices.
- No braided line on reels.
- NO CAT MEAT OR TROUT PELLET and only 1 kilo of CARP pellet per session.
- No bivvying up on the pleasure lakes.
- Please don't damage trees or shrubs. Treat other anglers with respect.



## DO NOT DISCARD YOUR OLD BAIT INTO THE LAKE OR AROUND YOUR PEG

Any problems regarding the fish or the fishery are to be reported to the fishery staff. The Fisheries Team reserve the right to add or alter these rules without prior notice, and to close any lakes as required for matches, festivals or environmental benefits without prior notice.

During the low season and festival weeks the Fisheries Team reserves the right to cancel matches, change match days, or combine matches without prior notice.

Please remove all litter from the lake and use the bins that are provided by the Fishing Lodge or the First Bite Café. Please enjoy the environment.

Dog walking around the lakes is not permitted between the hours of 10.00am and 4.00pm. Dogs must be kept on leads at all times and it is your responsibility to clean up after your dog. Anyone found not doing so may be asked to leave the park.

**Please note: White Acres is unable to hire keepnets for matches**

# White Acres Competition Fishing Rules



## White Acres Match Rules for Gold, Silver & Rover Residents' Matches

These rules apply to all matches held at White Acres. By entering a match at White Acres you agree to abide by these rules. If you are found to have broken any of these rules, you will forfeit your place on the match and will not be permitted to continue in the match. Your match entry fees will not be returned to you.

We reserve the right to amend/add to these rules at any time without prior notice.

These rules are in place to ensure the smooth running of the match and to make the match an enjoyable experience for everyone who is taking part or spectating. If you are in any doubt about any of the rules, or have any questions, please ask a member of our Fisheries Team who are always happy to help.

### Permitted Baits

Your bait allowance is 8 pints made up of carp/coarse pellets, combined maggots and casters, meat, corn and hemp. You cannot have more than 4 pints of combined maggots and casters, meat, corn and hemp. You can have 8 pints of pellet but you are then not allowed any other bait with you, other than from the additional bait list.

### Additional Baits

- A maximum of 1 kilo of worms.
- A maximum of 2 kilos of groundbait (including your paste).
- A maximum of half a loaf of bread.
- 1 small tub of mini boilies up to 10mm.

All of the above bait allowances refer to the amount of bait that you are allowed to take to the lake/your peg.

All baits must be prepared and ready to use. Surface/floating baits are not permitted and no balling in. You may catapult or throw small walnut sized balls. Please do not abuse this rule.

### Conduct During the Matches

We expect all competitors in matches to behave appropriately during matches and, in particular, to respect other competitors and not to engage in behaviour that is offensive, disruptive or likely to cause harm to other competitors, visitors and spectators or staff at White Acres, or cause harm to property. If the Fisheries Team, or any other member of the staff at White Acres feels your behaviour is offensive, disruptive, illegal or likely to cause harm as set out above, you will be required to forfeit the match and not take any further part in it, and your entry fees will not be refunded. In the event of a dispute concerning these rules or conduct during the match, the decision of the Fisheries Team is final.

If you are staying in a privately booked van and win one of our matches, you are not entitled to the 'pint for life' offer and free holiday. You will be invited back to winners' week but you will have to pay £75 for your week's accommodation should you wish to take up the offer and fish the mini-festival.

If you are found with more bait than the allowance listed here, or do not comply with the other requirements set out here relating to your bait, you are breaking White Acres rules and your place on the match will be forfeited and entry fees will not be returned.

### Other Rules

1. All anglers must be in possession of a current Environment Agency rod licence.
2. KEEPNETS ARE NOT TO GO INTO THE WATER UNTIL 15 MINUTES BEFORE THE START OF THE MATCH. There is now a 60lb weight limit per net. Anything over 60lb in the net will not count. Two keepnets are required on all matches and three are desired but not essential. Just please bear in mind the 60lb limit. No rocks or stones in your keepnets.
3. The floating method, candle or feeder floats or any adaptation of these methods are banned. A minimum hook length of 4 inches can be used on a method feeder/bomb.
4. All feeders and bombs must be free running to a bead.
5. No buoyant topped wagglers/splashes or any adaptation of these methods. The maximum width of a waggler is 3/8 of an inch. NO UNDER SHOTTING.
6. No floating the pole, the rattler, cupping water or tapping the water. When fishing the pole you must use a pole rig with a correctly shot float. The tip of your float must be a minimum of 8 inches from your connector or elastic. NO OVER SHOTTING.
7. No using a second pole to feed whilst fishing.
8. No pole cups must pass over the water before the start of the match.
9. Barbless hooks only, maximum size 12. No braided line to be used (main line or hook length).
10. 16 metre pole limit.
11. Anyone found discarding their old bait into the lake or around their peg will be disqualified.

**Please Note:** White Acres is unable to hire out keepnets. The Fisheries Team reserve the right to close any lakes as required for matches, festivals and/or environmental benefits without prior notice. During low season and festival weeks the Fisheries Team reserves the right to cancel matches, change match days and/or combine matches without prior notice.



## Pats Pool 22 Pegs, 2.2 Acres

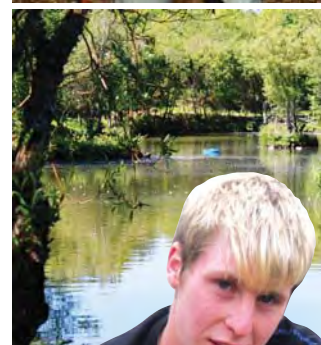
Pats Pool is our main specimen lake with Carp from 10lb to 30lb and many Catfish from 5lb to 68lb 14oz, and they take boilies so watch out! Depths average from 3 feet to 7 feet down the dead arm. There are 4 islands to fish.



**Stocking**  
Mirror, Common and Ghost Carp to 30lb, Catfish to 68lb.

**Methods**  
Heavy feed tends to put the fish off so a gentle approach is needed to outwit them.

**Best Baits**  
Boilies, meat, large pellets.



1. Day and night fishing to be paid for prior to fishing: if monies are collected on the bank you will be charged double.

2. Large unhooking mats and a minimum of a 42" landing net are compulsory on the specimen lakes.

A bucket of water must be kept next to your unhooking mat to wet your mat before you place any fish on it for unhooking. If fishing for Catfish you must use an appropriately sized mat/net/weight sling.

3. Please do not lift any fish from the water until you have wet your unhooking mat and have your weigh sling and scales ready, so that the fish is out of the water for the shortest period of time possible. All fish must be returned to the water in your weigh sling after weighing.

4. When photographing your fish you must be knelt down over your unhooking mat. **AT NO POINT SHOULD YOU BE STOOD UP HOLDING YOUR FISH.**

5. No retaining fish in sacks or keepnets at any time, day or night.

6. All rigs must be safe so that the fish can get rid of the lead should your line break. All rigs must have a minimum of 18" of anti-tangle tubing or something similar (a safe zone leader). **NO FIXED RIGS. PLEASE MAKE SURE ALL RIGS ARE SAFE**

**- IF IN DOUBT PLEASE ASK A MEMBER OF THE FISHERIES TEAM.**

7. Barbless hooks to be used at all times. **NO EXCEPTIONS.** Micro barbed and pinched barbed are not accepted. **NO TREBLES.** Maximum size 4, minimum size 10. No bent hook rigs or beach caster method to be used: no circle or eagle claw hooks to be used for Catfish.

8. Minimum line strength of 12lb to be used. No pole or feeder fishing at any time. **NO BRAIDED MAIN LINE.**

9. Rods with a minimum of a 2.5lb test curve must be used. You may only use a maximum of 2 rods at any one time. No rods to be left in the water unattended at any time.

10. **ONLY 48 HOURS ON EACH PEG.** This is at the discretion of the Fisheries Team. During quiet periods this rule can be relaxed but only with the permission of the Fisheries Team.

11. No heavy baiting. No nuts, peas or beans. No live baiting or dead baiting. Plugs and spinners are not allowed to be used.

12. No reserving pegs by leaving tackle or bivvys in the swim. If tackle is left unattended it will be removed after one hour by the Fisheries Team.

13. **NO LITTER TO BE LEFT IN YOUR SWIM OR AT THE LAKE WHATSOEVER.** Do not discard your old bait into the lake or around your peg as this encourages vermin and can contribute to poor water quality.

Any damage to the fish or the fishery must be reported to a member of the Fisheries Team.

Please do not damage any trees or shrubs.

All anglers under the age of 16 must be accompanied by an adult if night fishing.

An independent angler must witness Carp or Catfish of the Week (not family).

No responsibility will be accepted for loss, theft or damage to any fishing tackle/equipment.

All aspects of the rules are at the sole discretion of the Fisheries Team.

## Nelsons 24 Pegs, 2 Acres

Nelsons Specimen Lake is approximately 2 acres with Carp and Catfish from 3lb to 40lb in each side. There are several Ghost Carp over 20lb - the best recorded is 27lb. Best results are late evening, night and early morning. Best baits are boilies and 21mm pellets. Feed lightly. Fish the margins when quiet.

**Stocking**  
Mirror, Catfish, Common and Ghost Carp.

**Methods**  
Heavy feed tends to put the fish off, so a gentle approach is needed to outwit them.

**Best Baits**  
Floating baits, boilies, meat, large pellets.



**Please make sure all rigs are safe and not fixed. All rigs must be free running to ensure the quality of the fish and fishing.**



## Bolingey 50 Pegs, 3.5 Acres

Twelve miles from White Acres and one mile from Perranporth, this is one of the top ten fisheries in the country. Pleasure weights over 100lb and festival weights over 200lb. The fish range from 1lb to 20lb. Strong tackle is needed as you never know what's next. Strict rules apply - please ask at the Fishing Lodge. You must book early as this lake is very popular.

### Stocking

Mirror, Common and Ghost Carp up to 20lb

### Best Bait

Pellet, paste, corn. All baits will work as the lake is solid, just don't let the fish see the bait in your hands or you will have to brush the fish off your lap!

### Methods

The bigger fish come up in the water or down the margins. The feeder will work tight to the island.



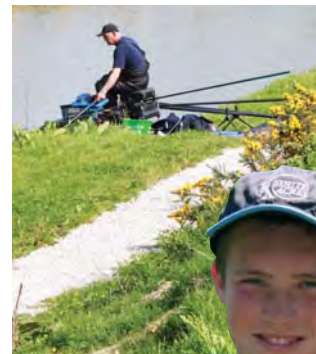
- Places are restricted to 30 anglers per day - please book in advance on arrival in the Fishing Lodge.
- On the morning you are going to the lake, all party members that are registered to go must come to The Tackle Shop, show their fishing permit and be ticked off the list. If you are found at the lake without your fishing permit, or your name not ticked off the list, you will be asked to leave the lake.
- All meat products are banned on the lake.
- Fishing time is from 8.30am and you must be off the lake and out of the car park by 7.00pm.
- One rod only.
- No floating baits, boilies or cat meat.
- White Acres rules apply.
- Open early April to end of October.

## Trewaters 36 Pegs, 2 Acres approx

'Middle Lake' and 'Bottom Lake' are both 1 acre in size and hold 18 well spaced pegs on each. The lakes are approximately 19 meters wide and five feet deep, and both are stocked with plenty of Carp, F1s, Tench and Skimmers.



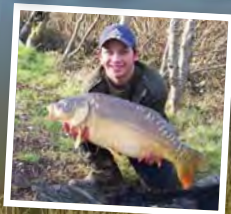
- Trewaters lakes are available for private match bookings only. Please contact the Fisheries Team for more information.
- White Acres can provide a full match pack including scales, weigh sling, weight sheet and results sheet if required. If you fill in your top 6 form we will publish the match results on our website.
- Resident match every Tuesday, subject to availability.
- Open match every Sunday, subject to availability.



Choose White Acres as your ideal fishing base - 13 wonderful lakes on park and 2 offsite lakes within a 10 mile radius. What more could you ask for?



# Hooked?



If you can't get enough of fishing at White Acres visit our website for:

- Angling updates from the Fisheries Team
- Interviews and advice from pro anglers
- Festival news and match results

Catch up on all the latest angling news at [www.news-reel.com](http://www.news-reel.com)

## Cast your eyes over why you should always book your stay directly through us.

PRE-BOOK  
YOUR FISHING  
PERMITS  
AND SAVE

UP  
TO  
**24%**

- Arrange your next trip directly through Parkdean and enjoy even more value and no hidden extras
- Top quality caravan and lodge accommodation, including the new Kenwyn caravan
  - The chance to fish our festivals\*
  - **FREE** indoor swimming pool
  - **FREE** kids' clubs & live entertainment
  - **FREE** bed linen, gas & electricity

Book 7 nights from only **£219\*** or 3 or 4 nights from only **£138.\***  
Call **0844 381 9125** or visit [parkdean.com/whiteacres](http://parkdean.com/whiteacres) now.

\*Subject to entry fees and availability. +£219 based on 7 nights commencing 15 or 29 October 2011. \*£138 based on 3 or 4 nights commencing 14, 17, 28 or 31 October.